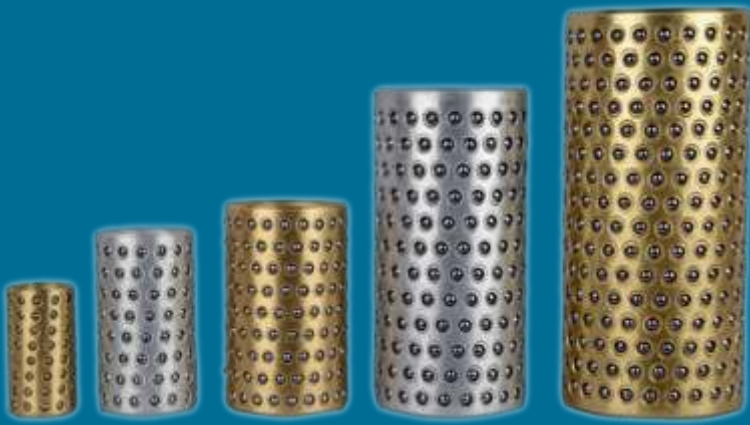


**Tooling Accessories AT IT'S BEST.**



**IDMAC**  
Indian Die-Mould Accessories Co.



**INDIAN DIE-MOULD ACCESSORIES CO.**



98C, Bhakari Industrial Area,  
Near Lohia Property Badkhal-Pali Road,  
Faridabad - 121004. [Haryana] India



: +91 9312625873  
: +91 8595702009  
: +91 8882325873



[idmackp@gmail.com](mailto:idmackp@gmail.com)

## What We Provide

Our aim is to provide the best possible service to our customer, not only in quality and accuracy but in early delivery as well. We can offer different variations of our different Die-Mould Accessories as per catalogue, but should none of these meet your requirements, we will try our best to make it specially for you to suit your exact needs, make a special point of ensuring that material used is of the highest quality, suitable for each application.

We have proven experience in selecting metals, developing designs, and understanding the details of customer needs to ensure you cost-effective performance run after run. We know what it takes to keep you competitive today, and will continue to strive to keep you competitive ahead.

## Our Products

- **Guide Post**
- **Ball Bearing Cages**
- **Die Springs (ISO & JIS)**
- **Cam Units**
- **Wear Plates**
- **Guide Pillar & Bush**
- **Punch Holders.**
- **Punch & Die Buttons**
- **Ejector Pins**
- **Date Marking Pins**
- **Polyurethane Elastomers**
- **Ejector Sleeves**
- **Parting Locks**
- **Taper Lock**
- **Ejector Blades**
- **Ball & Pin Plungers**

## Ball Bearing Cages



We have proven experience in selecting metals, developing designs, and understanding the details of customer needs to ensure you cost effective performance today, and will continue to strive to keep you competitive into the next decades.

IDMAC Code	Pillar Dia	Length	Ball Dia
BC 1B	14	40	3
	14	50	3
BC 2B	15	40	3
	15	50	3
BC 3B	16	40	4
	16	50	4
BC 4B	18	40	4
	18	50	4
BC 5B	19	54	4
	19	74	4
BC 6B	20	54	4
	20	74	4
BC 7B	22	54	4
	22	74	4
BC 8B	24	54	4
	24	74	4
	24	85	4
BC 9B	25	54	4
	25	74	4
	25	85	4

IDMAC Code	Pillar Dia	Length	Ball Dia
BC 10B	28	54	4
	28	74	4
	28	85	4
BC 11B	30	58	4
	30	85	4
	30	100	4
BC 12B	32	58	4
	32	85	4
	32	100	4
BC 13B	36	58	4
	36	85	4
	36	100	4
BC 14B	38	58	4
	38	85	4
	38	100	4
BC 15B	40	58	4
	40	85	4
	40	100	4

IDMAC Code	Pillar Dia	Length	Ball Dia
BC 16B	45	58	4
	45	85	4
	45	100	4
BC 17B	48	85	5
	48	105	5
	18	125	5
BC 18B	50	85	5
	50	105	5
	50	125	5
BC 19B	52	85	5
	52	105	5
	52	125	5
BC 20B	55	85	5
	55	105	5
	55	125	5
BC 21B	60	85	5
	60	105	5
	60	125	5
BC 22B	63	85	5
	63	105	5
	63	120	5

## Guide Post



### Guide post or integrated type holder guide pillar sets

The particular product guide pillars set are available in individual assembly. These guide pillar & bushes fitted with conventional holders of cast iron. The pillar & holder are integrated into a single part therefore it provides more strength than press fitted pillar bush sets. It can mount on plates itself with accurate distance holes & easily removable too.

D	L
25	90, 100, 110, 120
	130, 140, 150, 160
	170, 180, 200
30/32	110, 120, 130, 140, 150
	160, 170, 180, 200
	220, 240, 260
38	130, 140, 150, 160
	170, 180, 200, 220
	240, 260, 300
50	170, 180, 200
	220, 240, 260
	300, 350, 400
60	250, 280, 300, 350, 400, 450
	260, 300, 350, 400, 450

#### -: VARIABLES :-

- Plain Type
- Oil Less Type
- Aluminium Ball Cage Type
- Brass Ball Cage Type
- Nylon Ball Cage Type

## Die Springs



## ISO & Japanese Standard



Very Light Load  
Max. Deflection :  
50% of free length  
VL-Series  
Color : Purple



Light load  
Max Deflection:  
40% of Free length  
V-Series  
Color : Green



Medium Load  
Max Deflection :  
37.5% of Free length  
B-Series  
Color : Blue



Heavy load  
Max Deflection:  
30% of Free length  
R-Series  
Color : Red



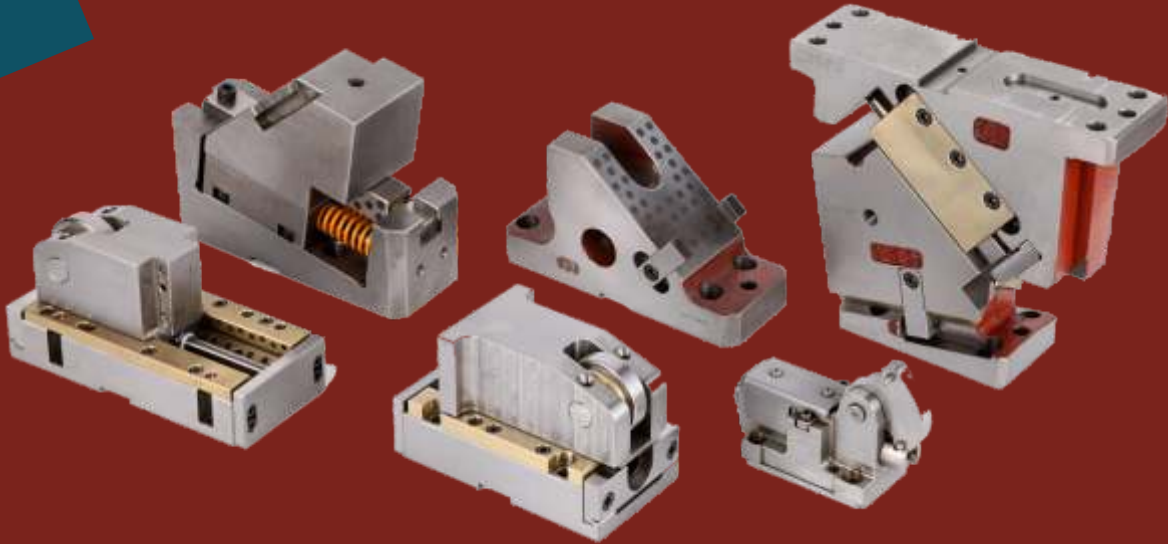
Extra Heavy load  
Max Deflection:  
25% of Free length  
G-Series  
Color : Yellow



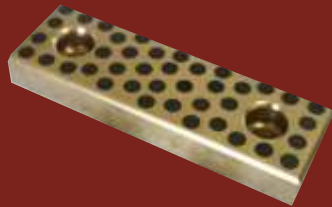
Ultra Heavy load  
Max Deflection :  
20% of Free length  
A-Series  
Color : White

- Also Available Round Wire Black Springs

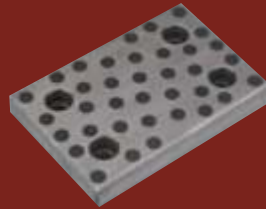
## Cam Units



## Wear Plates



Brass



Cast Iron



Bronze

## Guide Pillar & Bush

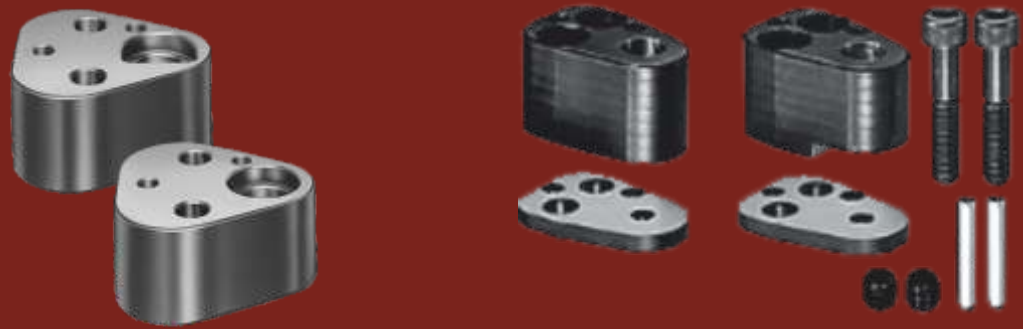
Our range of die casting, moulding and press tools supporting products are manufactured with actual precision. These guide pillar and bushes offers efficient guiding operation to the bush and the bush moves radially in components such as scroll compression and allied products. These are manufactured from high grade steel alloy and allied material.

We offer a technically specified range of Guide Pillar & Bush that are widely known for durability and safe operation. These are available as per the specific requirement of our client tsas reasonable prices.

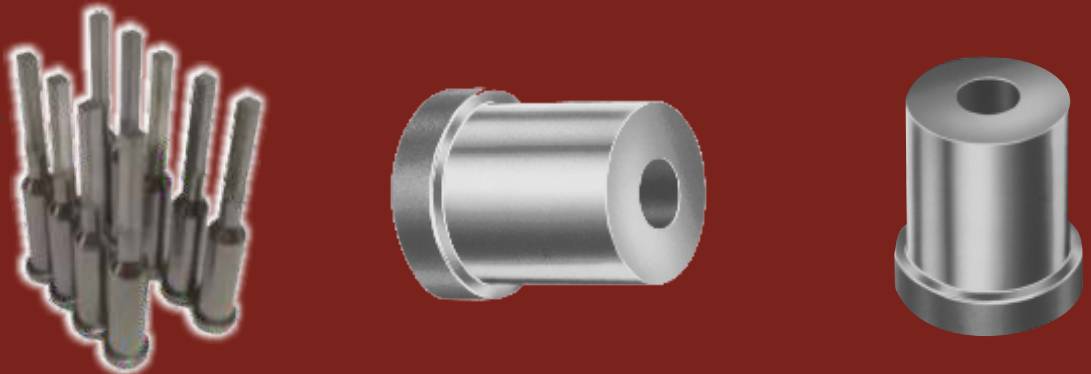


D	L
25*	90, 100, 110, 120
	130, 140, 150, 160
	170, 180, 200
32	110, 120, 130, 140, 150
	160, 170, 180, 200
	220, 240, 260
38	130, 140, 150, 160
	170, 180, 200, 220
	240, 260, 300
50	170, 180, 200
	220, 240, 260
	300, 350, 400
60	250, 280, 300, 350, 400, 450
	260, 300, 350, 400, 450

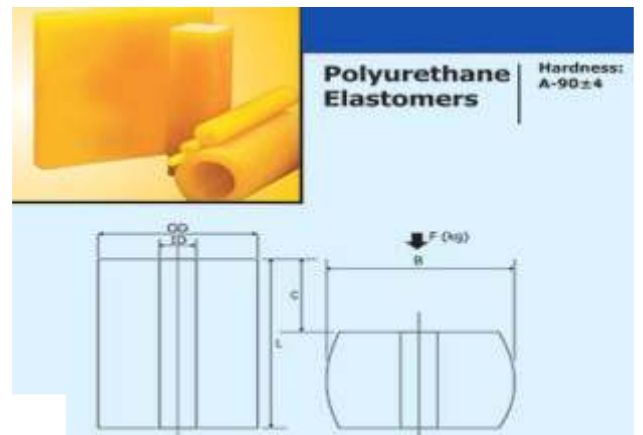
## Punch Holders



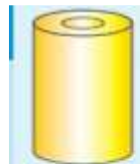
## Punch & Die Buttons



## Polyurethane Elastomers



IDMAC offer Polyurethane Elastomers. These products offering a number of unique properties which enable products to be manufactured to meet a range of demanding applications. Polyurethane compete against many other materials including rubber, plastic and metals. Polyurethane Elastomers have greater load-bearing capability than-do conventional elastomers of equal hardness.



- Colour: Yellow
- Recommended Compression: 25% to 30%

Sr. No.	OD	x	Tubes ID	x	Length (L)
	mm		mm		mm
01	18	x	8	x	300
02	20	x	8	x	300
03	22	x	8	x	300
04	25	x	8, 10	x	300
05	30	x	10, 12	x	300
06	32	x	13	x	300
07	40	x	10, 12	x	300
08	50	x	12, 15	x	300
09	60	x	17	x	300
10	63	x	17	x	300
11	70	x	21	x	300
12	80	x	21	x	300
13	90	x	21	x	300
14	100	x	21	x	300

Sr. No.	Solid Rounds	
	Dia	x Length
	mm	mm
01	6	x 150
02	8	x 100, 150
03	10	x 100, 150
04	12	x 300
05	16	x 300
06	18	x 300
07	20	x 300
08	22	x 300
09	25	x 300
10	30	x 300
11	32	x 300
12	40	x 300
13	50	x 300
14	60	x 300
15	63	x 300
16	70	x 300
17	80	x 300
18	90	x 300
19	100	x 300

- 1) High load bearing capacity
- 2) High impact resistance
- 3) Resistance to oil
- 4) High life expectancy
- 5) High abrasion resistance

**POLYURETHANE SHEETS:**  
300 mm x 300 mm x 3, 4, 5, 6, 8, 10, 12, 16, 20, 25, 30, 35, 40, 45, 50, 55 mm thick: Available Ex-stock  
**POLYURETHANE FLATS & SQUARES:** Available on request

## Ejector Pins



IDMAC offer a wide range Ejector Pins, Which are manufactured according to international quality standards. We employ tool steels used for ejection of plastic components in moulds.

To ensure optimum quality in the final product these ejector pins are tested on well-defined parameters before being delivered to our clients. Quality is our main concerns that why we produce our all products from high quality raw material & industries best tools & techniques.

IDMAC CODE	BODY DIA D'	HEAD			TOTAL LENGTH
		DIA D1	X X	LENGTH L1	
EP 2 x 100	2	4	x	3	100
EP 2 x 125	2	4	x	3	125
EP 2 x 150	2	4	x	3	150
EP 3 x 100	3	6	x	3	100
EP 3 x 125	3	6	x	3	125
EP 3 x 150	3	6	x	3	150
EP 3 x 200	3	6	x	3	200
EP 4 x 100	4	8	x	5	100
EP 4 x 125	4	8	x	5	125
EP 4 x 150	4	8	x	5	150
EP 4 x 200	4	8	x	5	200
EP 5 x 100	5	10	x	5	100
EP 5 x 125	5	10	x	5	125
EP 5 x 150	5	10	x	5	150
EP 5 x 200	5	10	x	5	200
EP 6 x 100	6	10	x	6	100
EP 6 x 125	6	10	x	6	125
EP 6 x 150	6	10	x	6	150
EP 6 x 200	6	10	x	6	200
EP 8 x 100	8	12	x	6	100
EP 8 x 125	8	12	x	6	125
EP 8 x 150	8	12	x	6	150
EP 8 x 200	8	12	x	6	200
EP 8 x 250	8	12	x	6	250
EP 10 x 100	10	14	x	6	100
EP 10 x 125	10	14	x	6	125
EP 10 x 150	10	14	x	6	150
EP 10 x 200	10	14	x	6	200
EP 10 x 250	10	14	x	6	250
EP 12 x 100	12	16	x	6	100
EP 12 x 125	12	16	x	6	125
EP 12 x 150	12	16	x	6	150
EP 12 x 200	12	16	x	6	200
EP 12 x 250	12	16	x	6	250

## Parting Locks



We are affianced in providing an extensive of Parting Locks to the customers. These products are extensively used in moulds for pulling the plates to a desired limit. Uniquely designed products act like a puller. Owing to the use of premium quality raw material, these products are highly effective & offer high performance to the patrons. Moreover, these products can be availed at market leading prices by the clients. Latest standards parting locks are provided by us for a variety of industry based applications. Our clients can avail this product at very nominal charges.

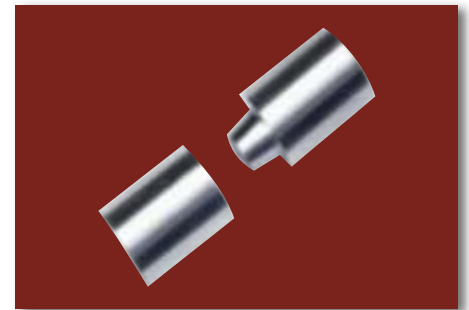
D	d	H	L	M	B
12	11	3.5	20	M6	5
13	11	3.5	20	M6	5
16	14	4	25	M8	6
20	16	5	30	M10	6

## Date Marking Inserts



## Taper Lock

IDMAC offer Taper Inter lock for provides positive alignment of cavities and cores. In this product extra grind stock is provided at the back of both male and female for positive fitting



Type	D	A	V	L	L1	L2	f1	f2	f3	M
NV	k6	5°								
	13		8.5	30	14	14	6	5	10	M4
	16		10	30	14	14	6	5	10	M4
	20		13	40	19	19	9	8	12	M6
	25		16	50	24	24	12	11	16	M8
	30		20	60	29	29	15	14	20	M10
	32		20	60	29	29	15	14	20	M10
	35		24	70	34	34	18	17	24	M12
42	30	80	39	39	24	23	24	M12		

## Ejector Blades



The Surface grinding department is responsible for most for the flat work. Some of the operations include slots, vent flats, hexes, squares, rectangles, offsets, angles. They are also responsible for the manufacture of a great variety of ejector blades.

We offer blade ejectors that are made of premium quality steel and allied metals. Available in diverse specification as provided by our clients, these blade ejectors can easily shot enclosed in dies and also used in casting.

## Ejector Sleeves

We manufacture a wide and finest quality ejector sleeve range which is made from high quality HSS and steel with many grades. It had great resistance towards corrosion which gives it a very durable and long life and

also offers dimensional accuracy at vert reasonable price price along with durable shelf life. It is placed on the center line at the bottom of the sleeve.

- Corrosion resistant
- Reasonable price
- Precision engineered
- Highly durable



## Ball & Pin Plungers



## OUR VALUABLE CLIENTS



## GROUP COMPANIES



Plot No. 305/2, Sec. No. 10,  
PCNTDA Bhosari, Pune – 411026  
Maharashtra India.

## INDIAN TECHNO TOOL CRAFTS

96, Bhakari Industrial Area,  
Near Lohia Property Badkhal-Pali Road,  
Faridabad - 121004. [Haryana] India